

www.pricewisemodularhomes.com

SILVERWOOD

SINGLE SECTION HOMES

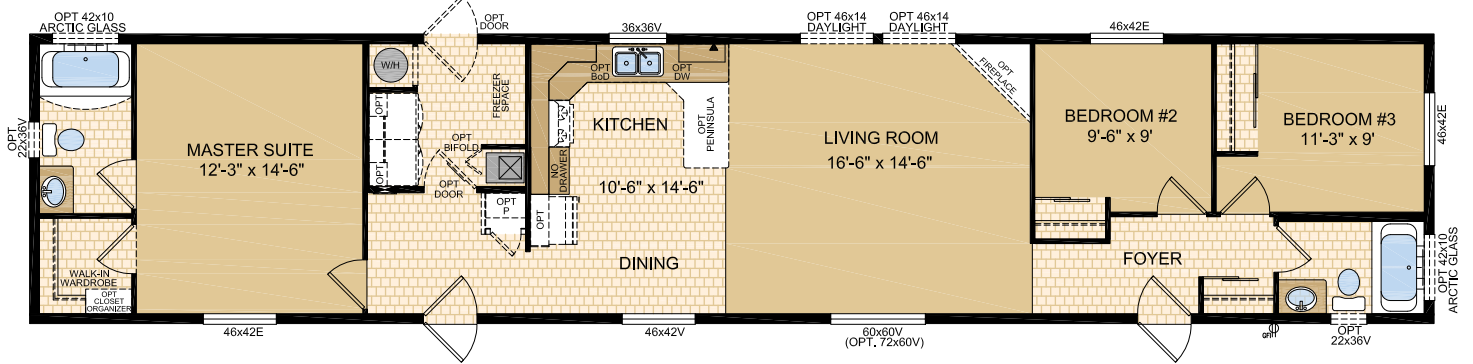


PriceWise
Modular Home Sales
100 North Park Drive,
Stony Plain, Alberta
780-405-7771

Kalimore

Model 16405

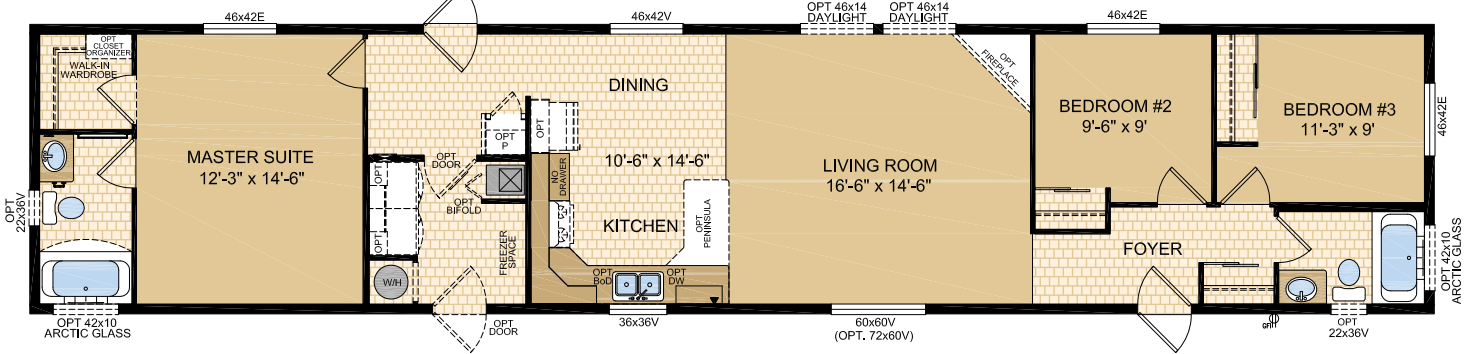
16' x 76' - 1,216 sq.ft. (Note: rendering shown on front cover)



Victoria

Model 16406

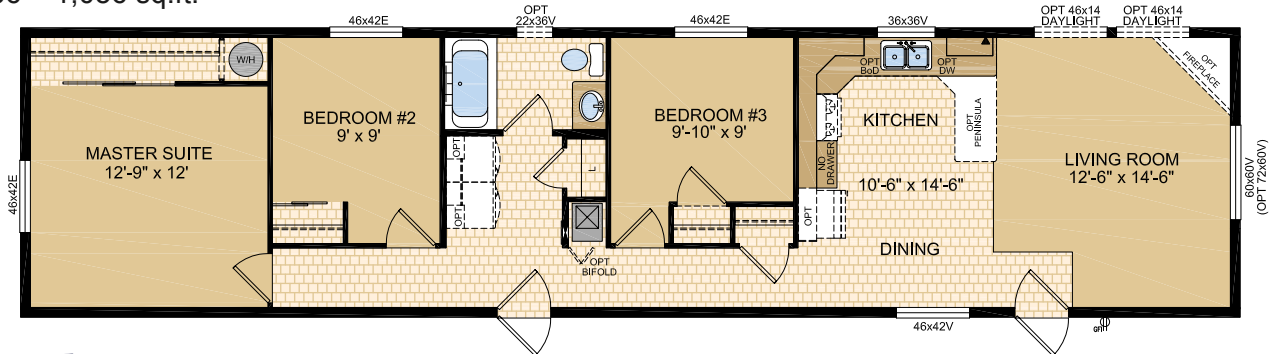
16' x 76' - 1,216 sq.ft.



Inverness

Model 16411

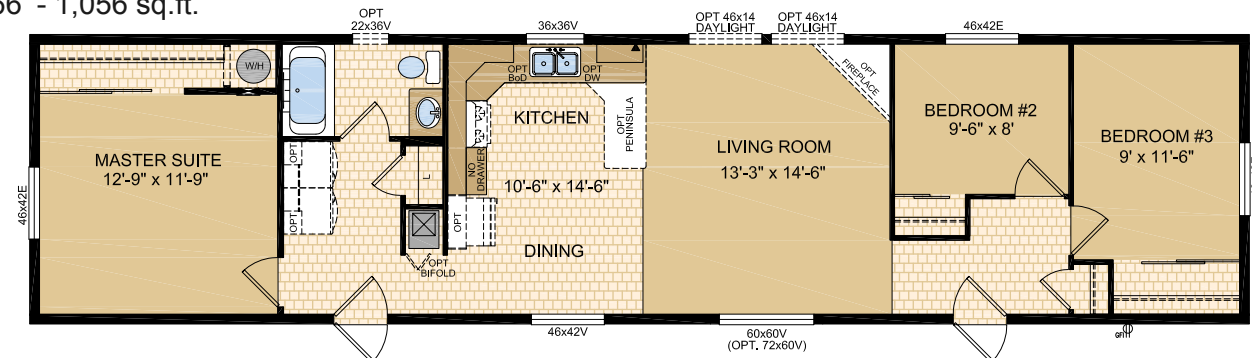
16' x 66' - 1,056 sq.ft.



Jackson

Model 16412

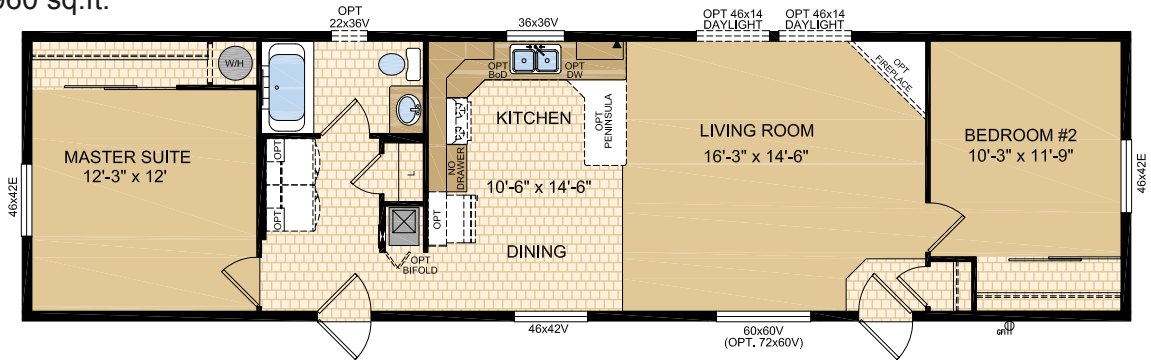
16' x 66' - 1,056 sq.ft.



Kelowna

Model 16422

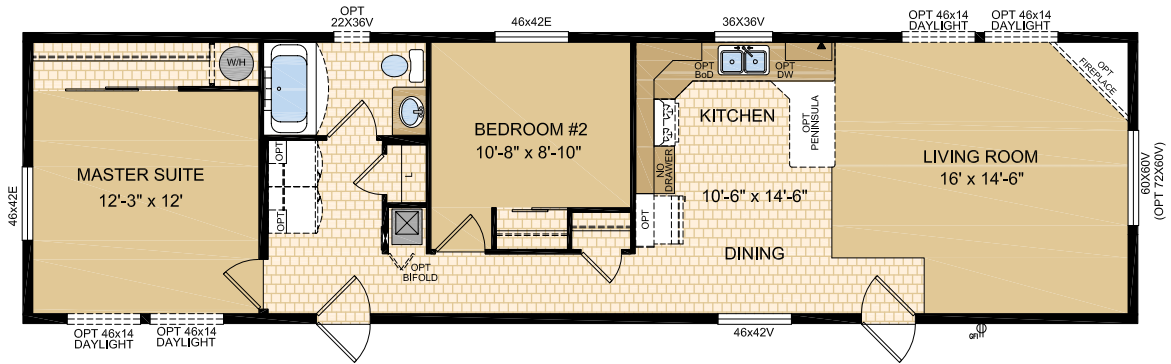
16' x 60' - 960 sq.ft.



Innsbruck

Model 16423

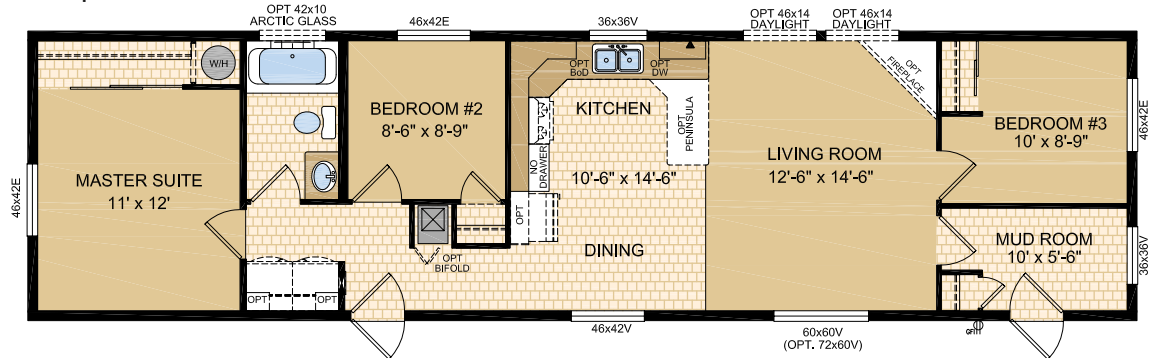
16' x 60' - 960 sq.ft.



Jamaica

Model 16426

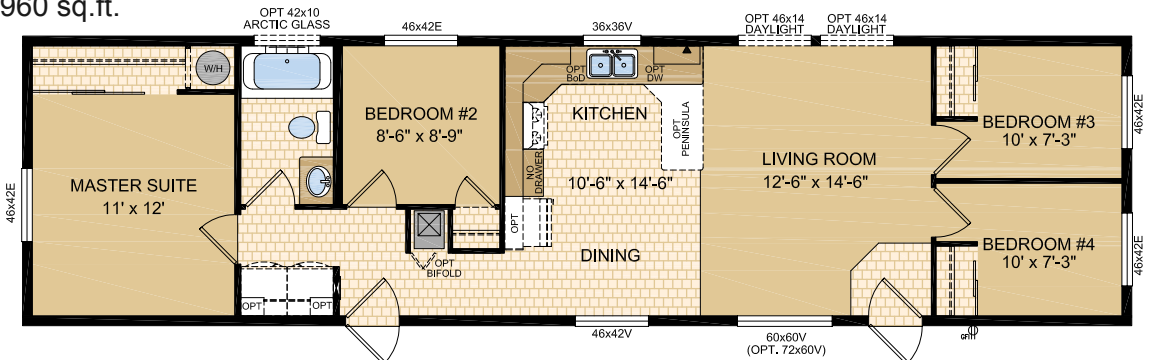
16' x 60' - 960 sq.ft.



Kampala

Model 16427

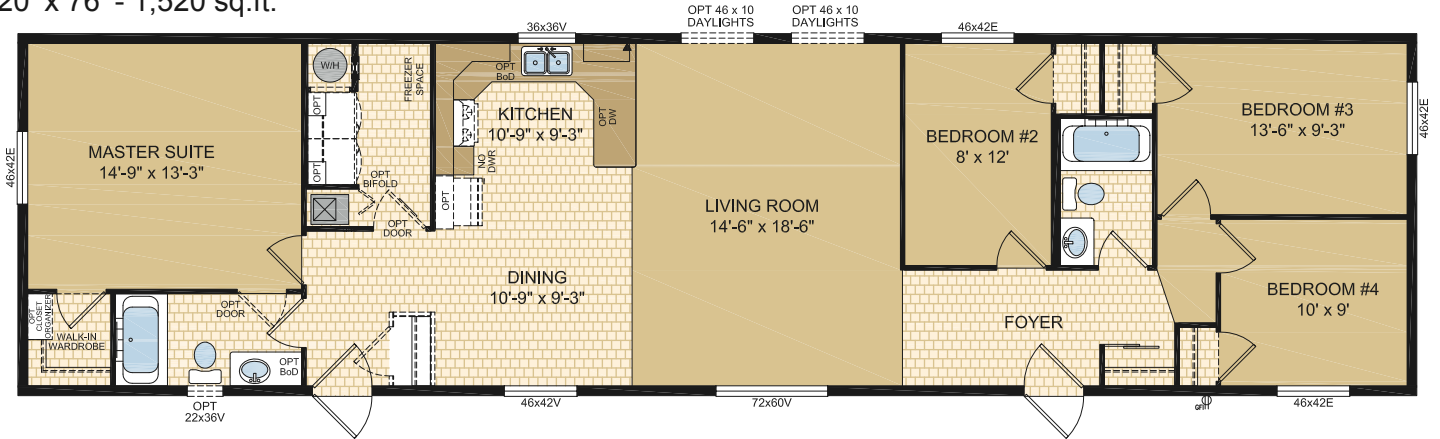
16' x 60' - 960 sq.ft.



Bayport

Model 20109

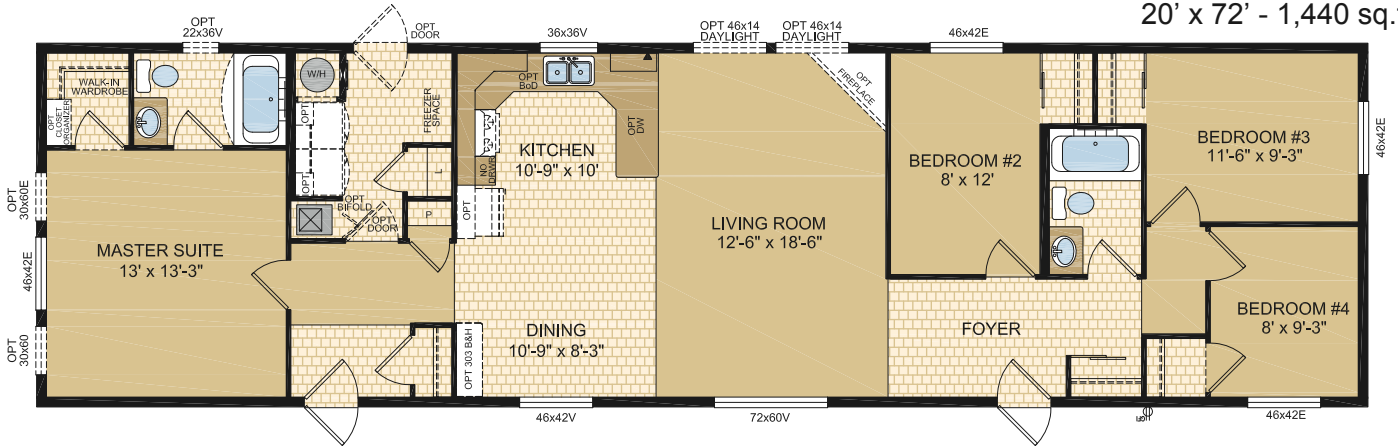
20' x 76' - 1,520 sq.ft.



Lauderdale

Model 20111

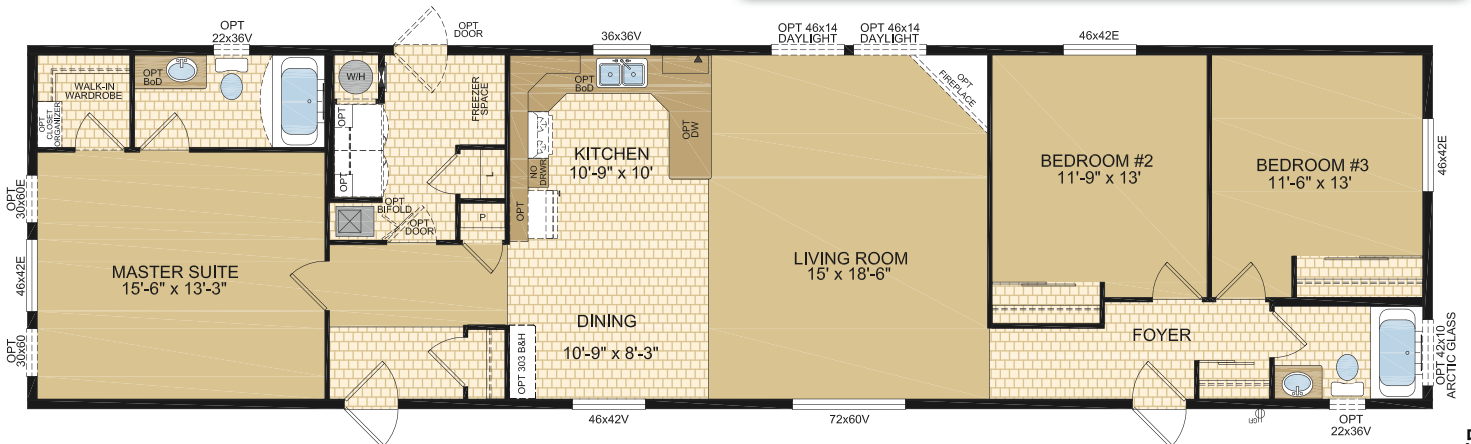
20' x 72' - 1,440 sq.ft.



Nashville

Model 20112

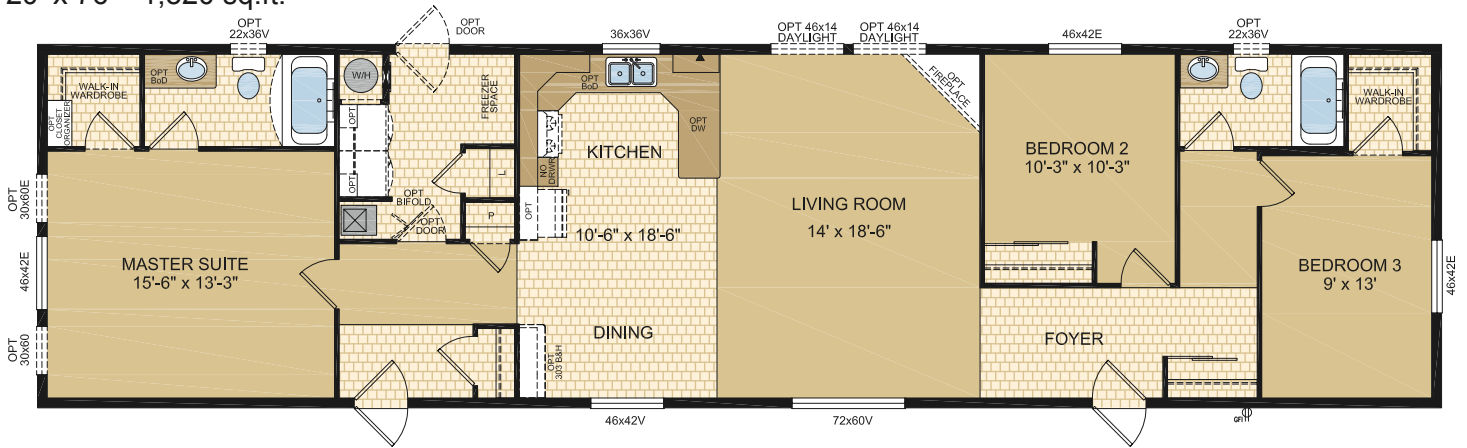
20' x 76' - 1,520 sq.ft.



Nantucket

Model 20113

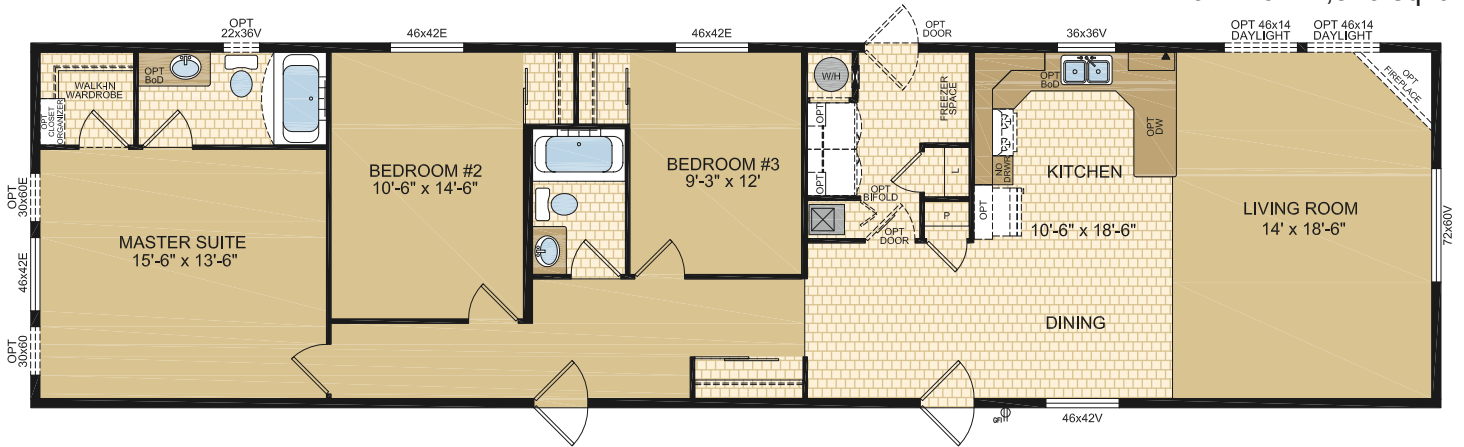
20' x 76' - 1,520 sq.ft.



Naples

Model 20114

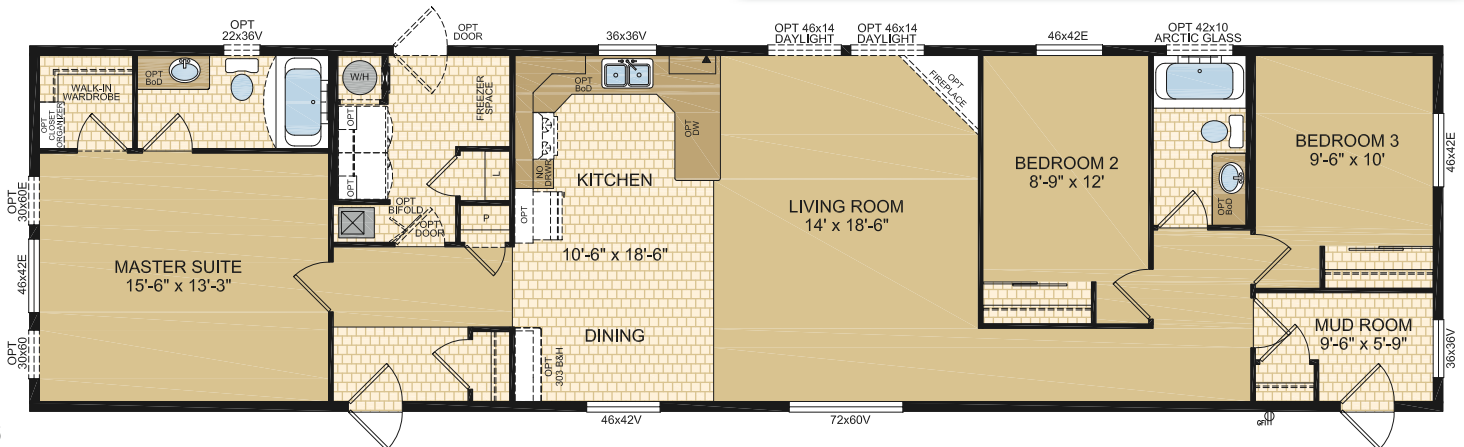
20' x 76' - 1,520 sq.ft.



Olympia

Model 20115

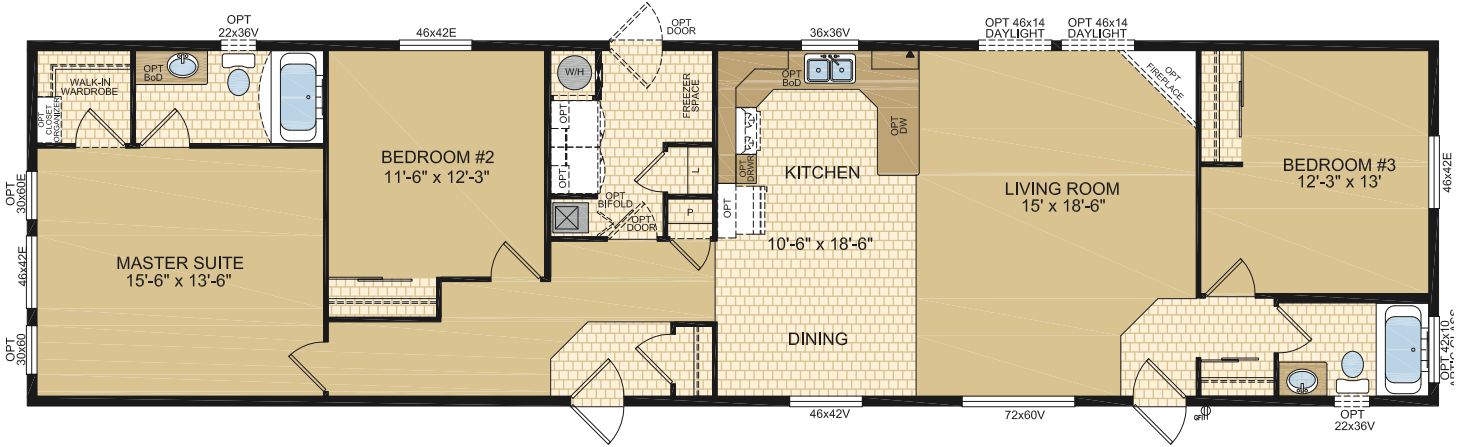
20' x 76' - 1,520 sq.ft.



Nassau

Model 20116

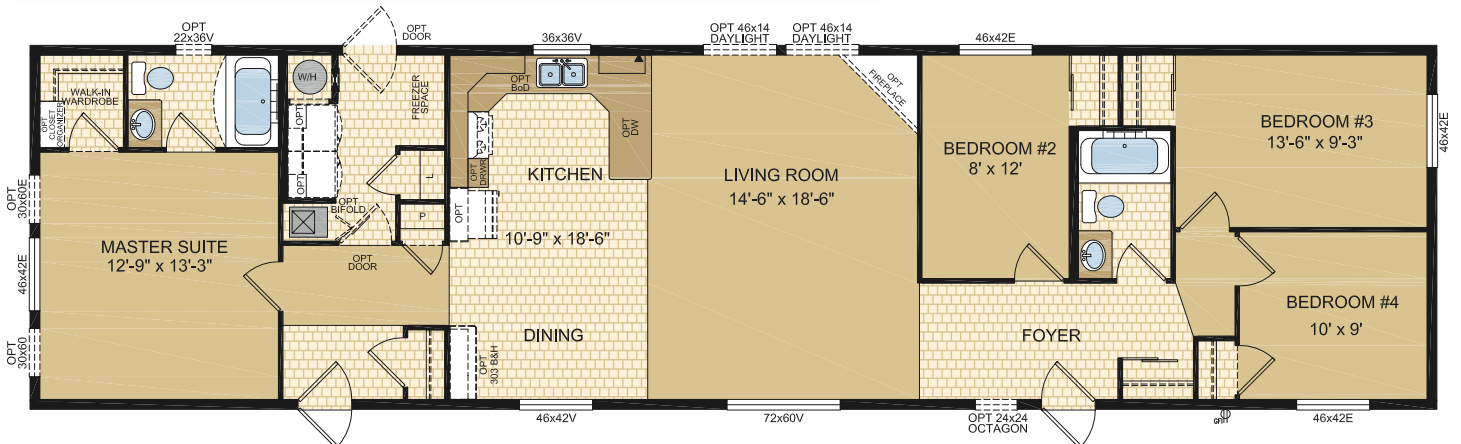
20' x 76' - 1,520 sq.ft.



Orlando

Model 20117

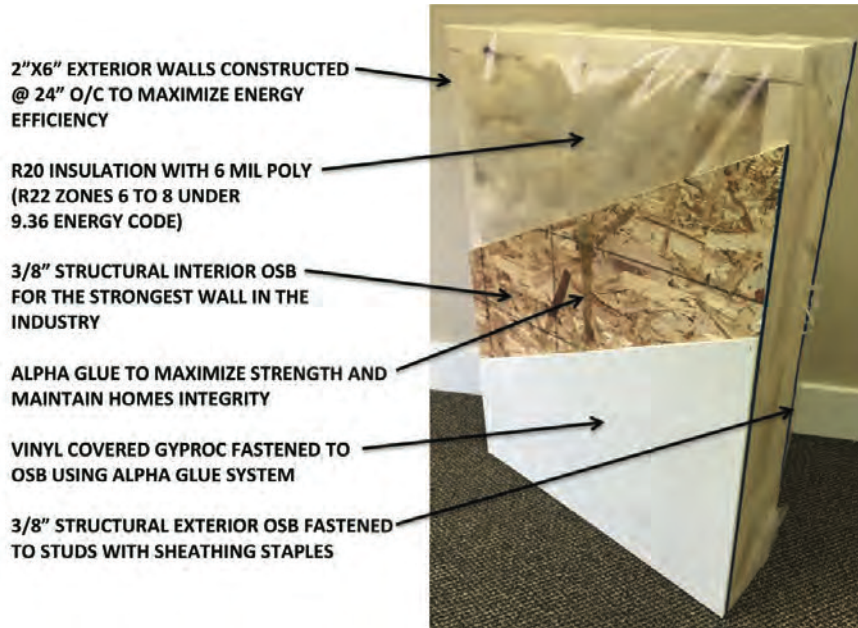
20' x 76' - 1,520 sq.ft.





Exterior Wall Construction

Best Standard in the Housing Industry!



"We surpass the competition!"

PriceWise
Modular Home Sales
100 North Park Drive
Stony Plain, Alberta
780-405-7771